

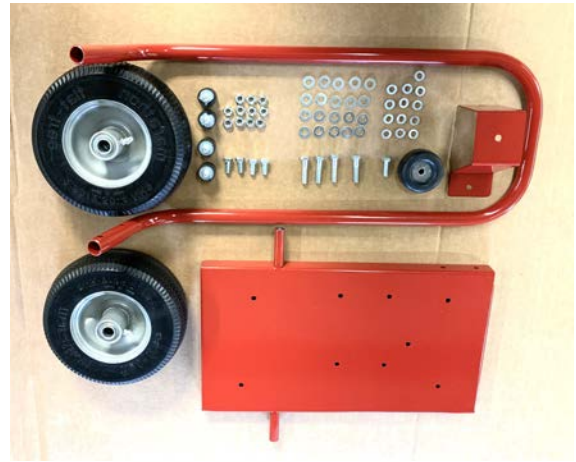
GENERAL PUMP & EQUIPMENT CO., INC.

MANUFACTURING QUALITY HYDROSTATIC TESTING EQUIPMENT FOR CONTRACTORS AND INDUSTRY SINCE 1969
3276 BRUENING AVENUE SW
CANTON, OHIO 44706
PHONE 330-455-2100
TOLL FREE 800-594-5178
EMAIL gentest@bright.net

PLEASE READ BEFORE ATTACHING AR1.5 SERIES HYDRO-TEST UNIT TO CTAR SERIES CART

Included with CTAR Cart:

- Qty 1 Base
- Qty 1 Handle
- Qty 2 Wheels/Tires
- Qty 1 Foot Bracket
- Qty 1 2 ½” Rubber Foot
- Qty 1 5/16-18 x 1 ¼” Bolt
- Qty 4 5/16-18 x 1 ½” Bolts
- Qty 4 5/16-18 x ¾” Bolts
- Qty 13 5/16 Lock Washers
- Qty 15 5/16 Flat Washers
- Qty 11 5/16 Nuts
- Qty 4 Vibros
- Qty 4 5/16 Large Flat Washers



Prior to assembly please make sure you have all parts listed above for CTAR cart.

Assembly instructions:

1. Attach rubber foot to foot bracket using the 5/16 x 1 ¼” bolt, flat washer, lock washer and nut as shown in Reference One.
2. Attach foot bracket to base using two 5/16 x ¾” bolts, flat washers, lock washers and nuts as shown in Reference Two.
3. Attach handle to the base using four 5/16 x 1 ½” bolts, flat washers, lock washers and nuts as shown in Reference Three.
4. Attach wheels/tires to the base using two 5/16 x ¾” bolts, flat washers and lock washers.
5. To attach the four vibros to your AR1.5 Series Hydrostatic Tester, stand unit up on cord bracket end. See Reference Four. **IMPORTANT THIS MUST BE DONE ONE STUD AT A TIME.** Install vibros on the studs circled. Remove nut, lock washer, and flat washer from stud and screw vibro on by hand and tighten as firmly as possible.
6. Install your unit on cart with cord wrap bracket towards handle. Tighten unit to base using the four large flat washers, lock washers and nuts.



Reference One

Rubber bumper for foot bracket.



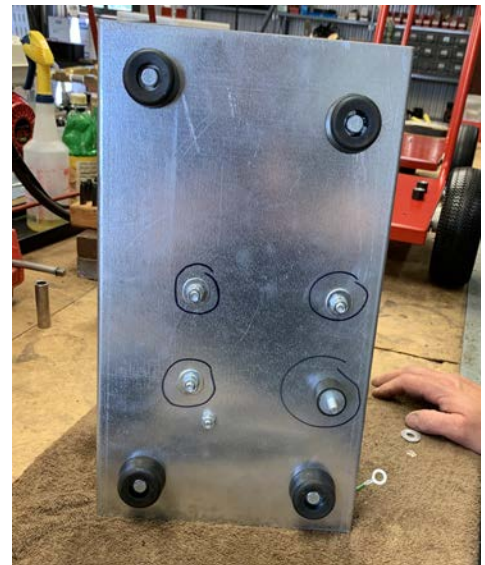
Reference Two

Completed foot bracket assembly.



Reference Three

Handle attachment ... shown from the bottom of the base.



Reference Four

Motor mount bolts are circled... remove one at a time. Insert vibro on stud and tighten. Repeat for other three motor mounts.